

Glide

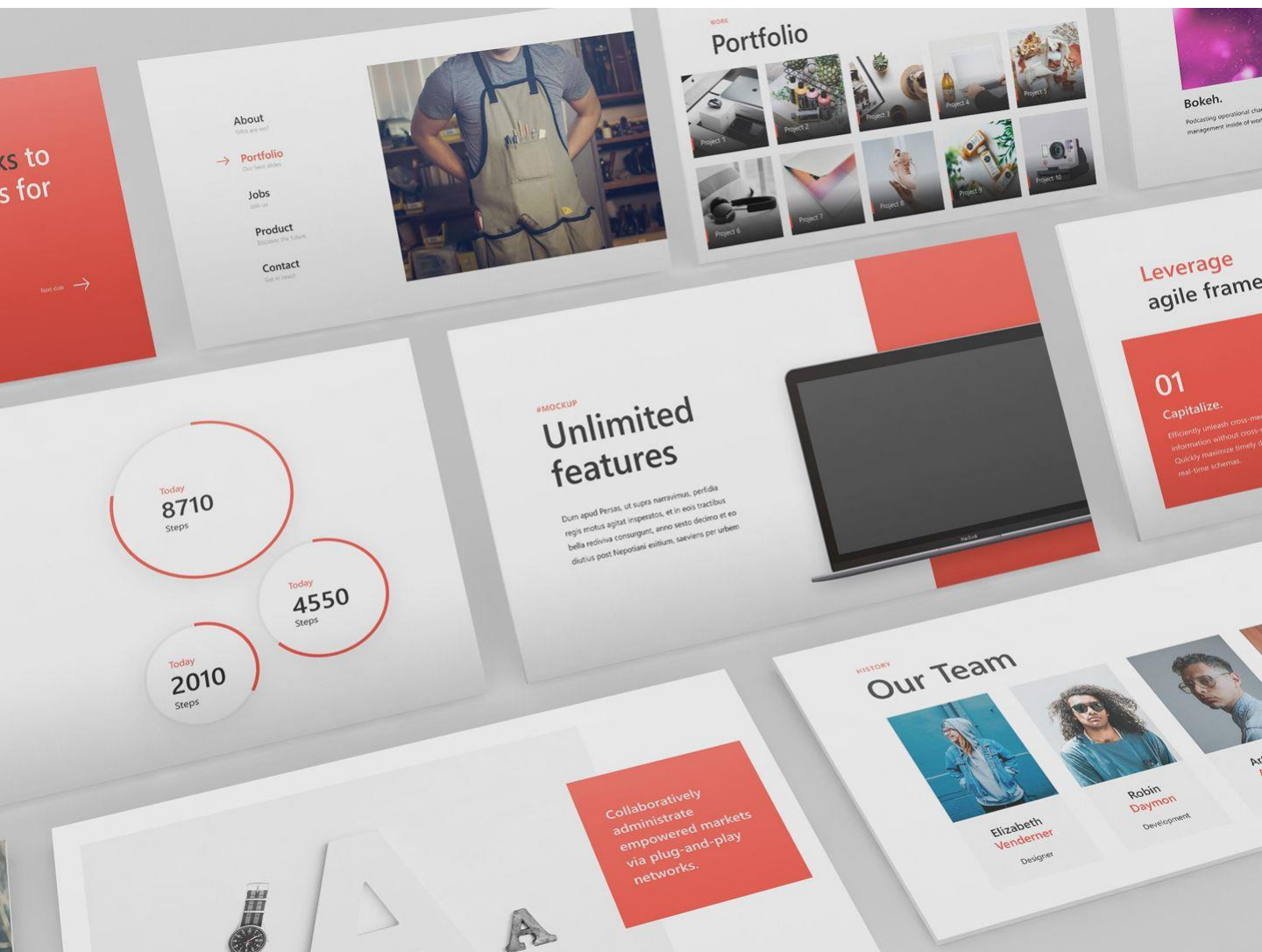
A free template by



Hello.

And thanks for downloading Glide. At Slidor, we want anyone to be able to produce some quality slides starting from a fresh template, for free.

You can find more about us on <http://www.slidor.fr/en> Please send us an email to glide@slidor.fr if you need to contact us, or just to say hi!



Glide

Why Glide ? Why is it free?

We have helped 500+ companies to design their deck for the past 5 years & today we want to help startups & entrepreneurs that are too young to work with us.

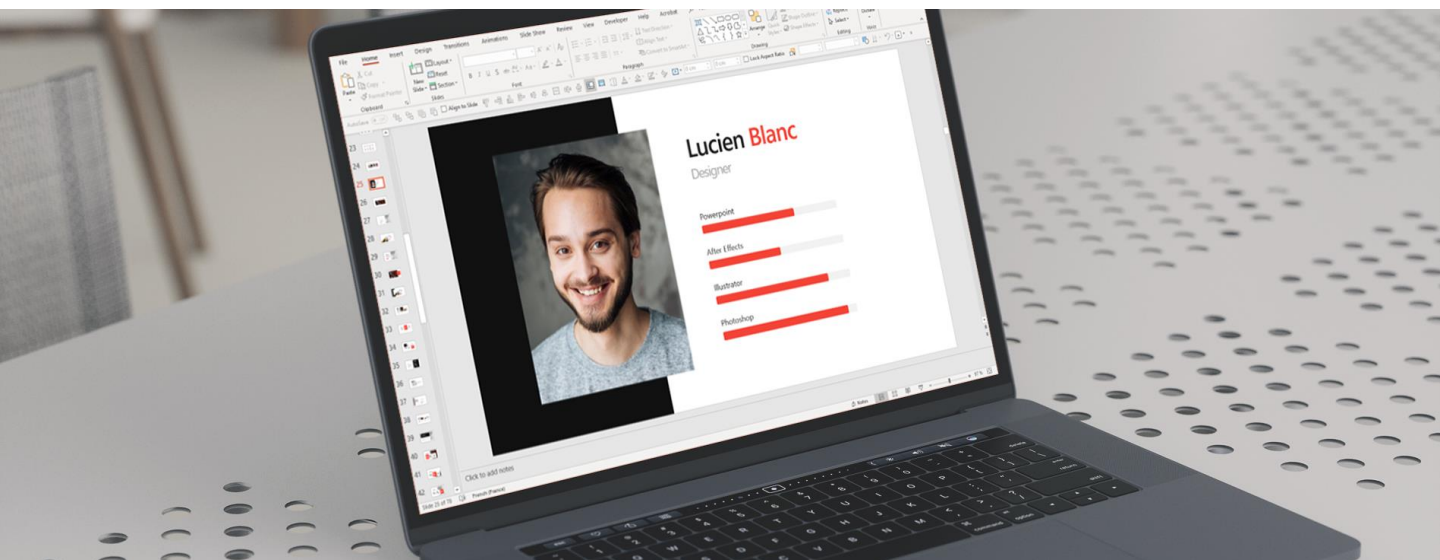
Templates available on the Internet are good but most of the times, deceptive because you would need to install fonts, download additional elements (pictures, font icon packs, etc.), remove all the watermarks and generally you would have to pay for it. The result is a heavy presentation that would not keep the same design, as it would only be editable in yours.

Glide is a good way to present a business or a project without anything to install & with quality resources included. We know that it might not fit for all projects, but we are sure it is a good start!

How to use it?

You need PowerPoint 2010, 2013, 2016 / Office 365 for PC, or 2011, 2015 for Mac to use this template. Previous versions have not been tested but might be ok for basic use.

You don't have to install anything in order to use Glide, just open the right *.pptx file for your given OS.



What are the **main differences** between Windows and Mac versions?

The main difference is the font used. System fonts are different on each OS.

We chose Segoe UI for Windows, and Helvetica for Mac.

The result is slightly different, but the overall design stays the same.

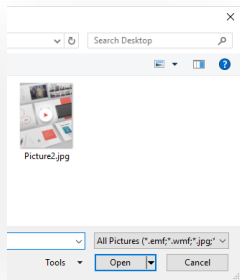
Every other feature is available for both Mac and Windows.

How to **replace an image**?



Delete the current image. Then click on the icon in the center.

(you can also drag & drop your image into this shape).



Pick your image in the explorer, and click insert.



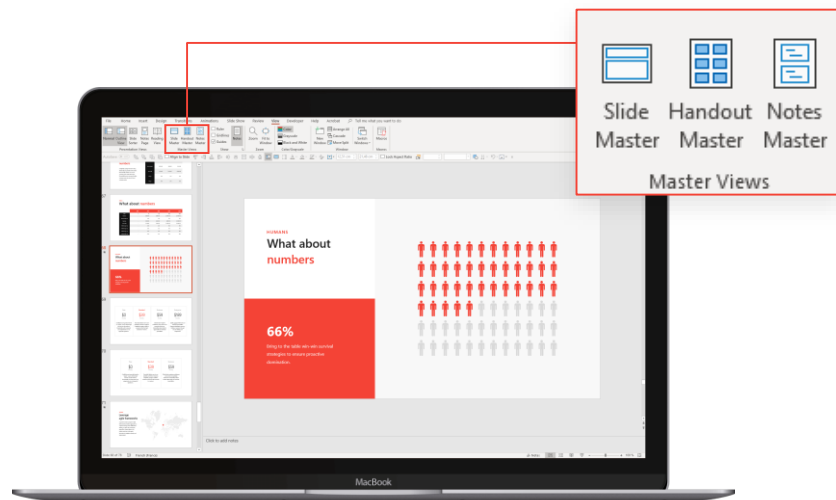
Done.

This works with **all images** on the presentation.

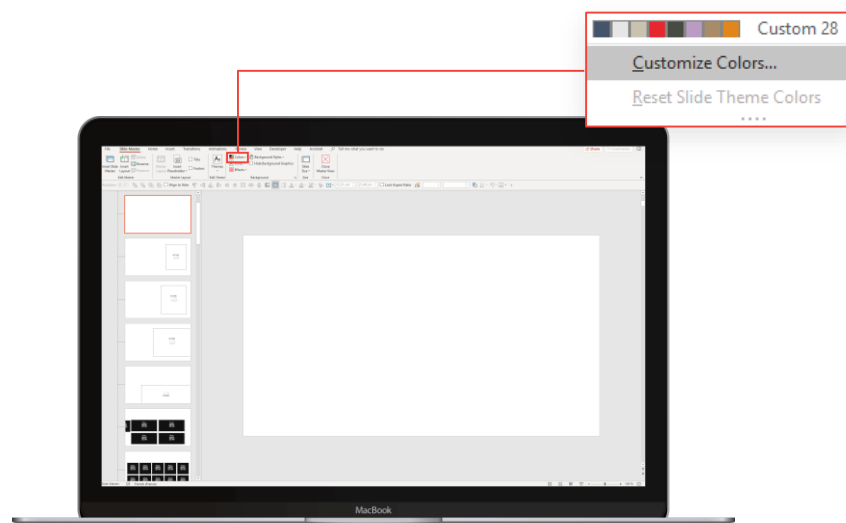
How to change the default accent color?

The default theme uses this color as an accent: ●

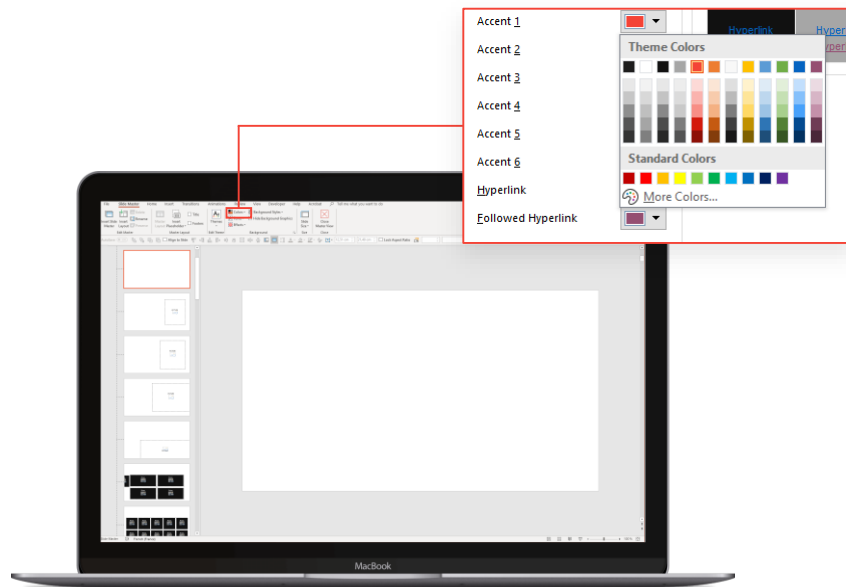
You can simply change it to any color. Everything that previously had this red accent color will automatically change to the one you choose.



Go to 'View'
Select 'Slide Master'



Select 'Colors'
Click on 'Customize Colors'



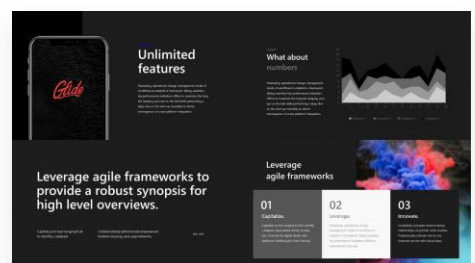
The accent color is 'Accent 1'
Click on 'More Colors' to modify it.

Then, save your presentation,
close it and reopen it to see the changes.

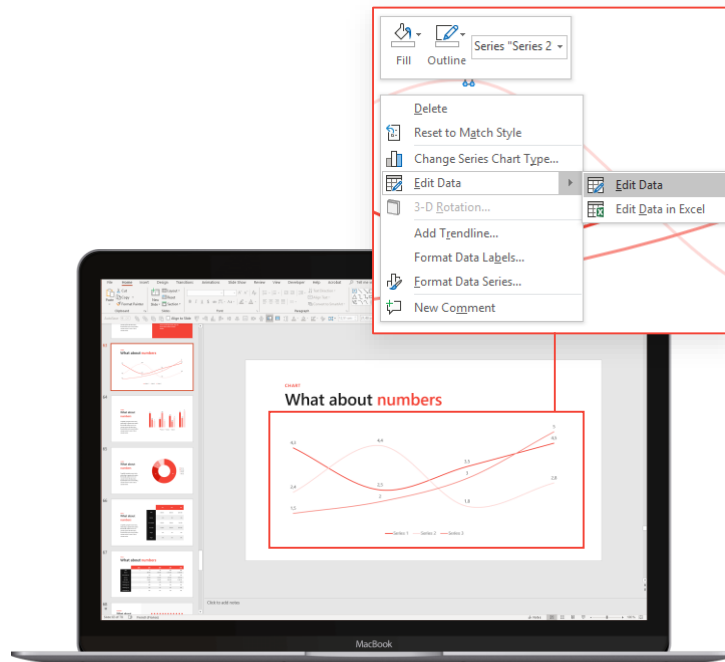
Everything that was previously red will change to your new color ↓



You can play with other accents to change the colors of the presentation and customize the whole thing in order to have a dark theme for instance →



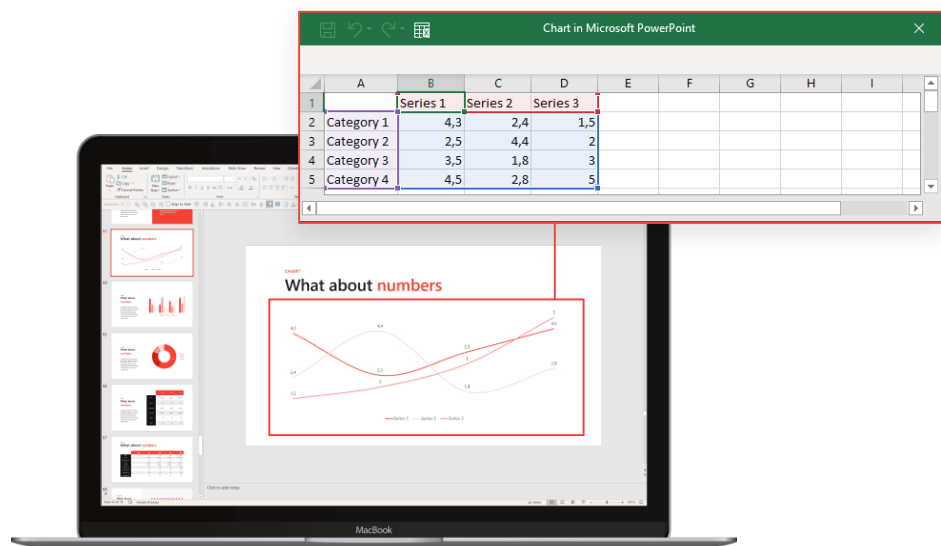
How to edit **graph data**?



Right click on the graph

Select 'Edit Data'

Click on 'Edit Data'



Edit data!

How to use and edit icons?

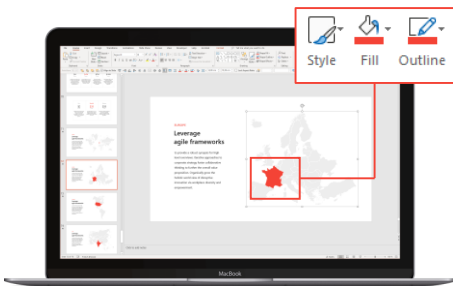
Icons are vector shapes, so they never get pixelated, you can resize them and they will keep their perfect quality.



You can change the color of any icon by using the 'Shape Fill' option.

How to use and edit maps?

Map is also a vector shape, this means you can interact and change colors of any country.



Use 'Shape Outline' to change the outline color of the map.

Use 'Shape Fill' to change the inside color of a country.



If you need to show only one part of the map, you can delete countries by ungrouping the map and deleting countries one by one.

Can you help me?

Unfortunately, we don't provide any assistance for the use of this free product.

For anything else, you can send us an email to glide@slidor.fr

Enjoyed this free **template** ?

Please give us a like on Facebook, or follow us on Instagram!



Glide

A free template by



VISIT US

